



CAB ● PENINSULA
RESIDENCES





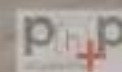
ESTA OBRA ESTÁ PROTEGIDA Y NO PODRÁ SER COPIADA O UTILIZADA, TOTAL O PARCIALMENTE, SIN LA AUTORIZACIÓN ESCRITA DE P(h)+p ARQUITECTOS EXPLICITA PARA ELLO







ESTA OBRA ESTÁ PROTEGIDA Y NO PODRÁ SER COPIADA O UTILIZADA, TOTAL O PARCIALMENTE, SIN LA AUTORIZACIÓN ESCRITA DE PINHP ARQUITECTOS EXPLÍCITA PARA ELLO.

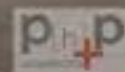




ESTA OBRA ESTÁ PROTEGIDA Y NO PODRÁ SER COPIADA O UTILIZADA TOTAL O PARCIALMENTE SIN LA AUTORIZACIÓN ESCRITA DE Ph+P ARQUITECTOS PARA ELLO

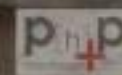


ESTA OBRA ESTÁ PROTEGIDA Y NO PODRÁ SER COPIADA O UTILIZADA, TOTAL O PARCIALMENTE, SIN LA AUTORIZACION ESCRITA DE P[h]p ARQUITECTOS EXPLICITA PARA ELLO





ESTA OBRA ESTÁ PROTEGIDA Y NO PODRÁ SER COPIADA O UTILIZADA, TOTAL O PARCIALMENTE, SIN LA AUTORIZACIÓN ESCRITA DE P[h]p ARQUITECTOS EMPÚJICA PARRA S.A.







ESTA OBRA ESTÁ PROTEGIDA Y NO PODRÁ SER COPIADA O UTILIZADA, TOTAL O PARCIALMENTE, SIN LA AUTORIZACIÓN ESCRITA DE P(H)+P ARQUITECTOS EXPLICITA PARA ELLO



FACADE



GENERAL LAY-OUT



GENERAL LAY-OUT

1ST ,2ND,3RD LEVEL



PARKING 1

← A PUEBLO BONITO

VIA DE LERRY

PARKING 1
FFL + 73.20

101 A 101 A
102 A 102 A
201 A 201 A
202 A 202 A
301 A 301 A
302 A 302 A
101 B 101 B
102 B 102 B

PARKING 2

← PUBLIC ROAD

PARKING 2
FFL+ 76.55

101 C
102 C
201 C

402 C

301 B
400 B

401 C
401 C

202 C
301 C
202 C

302 C
301 B
302 B

400 A

202 B
201 B
202 B

FLOOR PLAN

SWIMMING POOL

SWIMMING POOL AREA

- 1 Swimming Pool
- 2 Jacuzzi
- 3 Sundeck
- 4 Garden



FLOOR PLANS

GYM - RESTAURANT

GYM - RESTAURANT

- 1 Gym
- 2 Terrace / Restaurant
- 3 Gym Terrace
- 4 Restaurant Terrace
- 5 Bathroom
- 6 Storage



FLOOR PLAN

APARTMENT 101-A
3 Bedrooms + terraces
1849.45 SQ FT + 284.05 SQ FT



APARTMENT 101-A, BUILDING A

- 1 Living / Dining Room
- 2 Kitchen
- 3 Terrace
- 4 Laundry
- 5 Master Bedroom
- 6 Bedroom 2
- 7 Bedroom 3
- 8 Bathroom



FLOOR PLAN

APARTMENT 102-A
2 Bedrooms + terraces
1570.45 SQFT + 260.91 SQ FT



APARTMENT 102-A, BUILDING A

- 1 Living / Dinning Room
- 2 Kitchen
- 3 Terrace
- 4 Laundry
- 5 Master Bedroom
- 6 Bedroom 2
- 7 Bathroom



FLOOR PLAN

APARTMENT 201-A

3 Bedrooms + terraces

1849.45 SQ FT + 284.05 SQ FT



APARTMENT 201-A, BUILDING A

- 1 Living / Dining Room
- 2 Kitchen
- 3 Terrace
- 4 Laundry
- 5 Master Bedroom
- 6 Bedroom 2
- 7 Bedroom 3
- 8 Bathroom



FLOOR PLAN

APARTMENT 202-A
2 Bedrooms+ terraces
1570.45 SQFT + 260.91 SQ FT



APARTMENT 202-A, BUILDING A

- 1 Living / Dinning Room
- 2 Kitchen
- 3 Terrace
- 4 Laundry
- 5 Master Bedroom
- 6 Bedroom 2
- 7 Bathroom



FLOOR PLAN

APARTMENT 301-A

3 Bedrooms + terraces

1850.31 SQFT + 260.91 SQ FT



APARTMENT 301-A, BUILDING A

- 1 Living / Dining Room
- 2 Kitchen
- 3 Terrace
- 4 Laundry
- 5 Master Bedroom
- 6 Bedroom 2
- 7 Bedroom 3
- 8 Bathroom



FLOOR PLAN

APARTMENT 302-A

2 Bedrooms + terraces

1570.45 SQFT + 260.91 SQ FT



APARTMENT 302-A, BUILDING A

- 1 Living / Dining Room
- 2 Kitchen
- 3 Terrace
- 4 Laundry
- 5 Master Bedroom
- 6 Bedroom 2
- 7 Bathroom



FLOOR PLAN

APARTMENT 400A

Penthouse (3 Bedrooms + terraces)

2722.08 sqft + 1090.59 sqft



APARTMENT 400A, BUILDING A

- 1 Living / Dining Room
- 2 Kitchen
- 3 Terrace
- 4 Laundry
- 5 Master Bedroom 1
- 6 Walk in closet
- 7 Master Bedroom 2
- 8 Bedroom 3
- 9 Bathroom





FLOOR PLAN

APARTMENT 101-B
3 Bedroom + terraces
1856.77 SQFT + 283.41 SQ FT



APARTMENT 101-B, BUILDING B

- 1 Living / Dining Room
- 2 Kitchen
- 3 Terrace
- 4 Laundry
- 5 Master Bedroom
- 6 Bedroom 2
- 7 Bedroom 3
- 8 Bathroom



FLOOR PLAN

APARTMENT 102-B

2 Bedroom + terraces

1570.45 SQ FT + 274.80 SQ FT



APARTMENT 102-B, BUILDING B

- 1 living / Dining Room
- 2 Kitchen
- 3 Terrace
- 4 Laundry
- 5 Master Bedroom
- 6 Bedroom 2
- 7 Bathroom



FLOOR PLAN

APARTMENT 201-B

3 Bedroom + terraces

1856.77 SQFT + 283.41 SQ FT



APARTMENT 201-B, BUILDING B

- 1 Living / Dining Room
- 2 Kitchen
- 3 Terrace
- 4 Laundry
- 5 Master Bedroom
- 6 Bedroom 2
- 7 Bedroom 3
- 8 Bathroom



FLOOR PLAN

APARTMENT 202-B
2 Bedroom + terraces
1570.45 SQ FT + 274.80 SQ FT



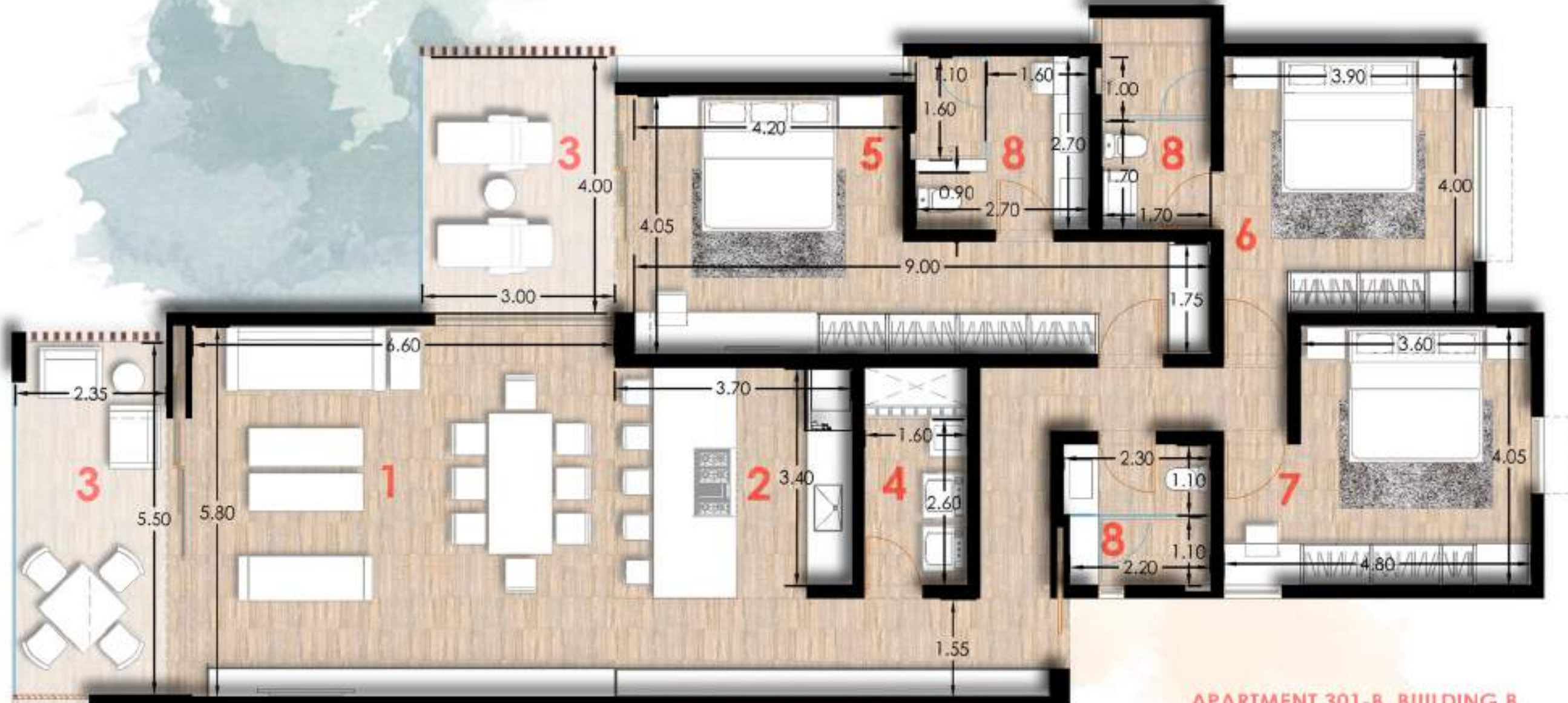
APARTMENT 202-B, BUILDING B

- 1 Living / Dining Room
- 2 Kitchen
- 3 Terrace
- 4 Laundry
- 5 Master Bedroom
- 6 Bedroom 2
- 7 Bathroom



FLOOR PLAN

APARTMENT 301-B
3 Bedroom + terraces
1856.77 SQFT + 283.41 SQ FT



APARTMENT 301-B, BUILDING B

- 1 Living / Dining Room
- 2 Kitchen
- 3 Terrace
- 4 Laundry
- 5 Master Bedroom
- 6 Bedroom 2
- 7 Bedroom 3
- 8 Bathroom



FLOOR PLAN

APARTMENT 302-B

2 Bedroom + terraces

1570.45 SQ FT + 274.80 SQ FT



APARTMENT 302-B, BUILDING B

- 1 Living / Dining Room
- 2 Kitchen
- 3 Terrace
- 4 Laundry
- 5 Master Bedroom
- 6 Bedroom 2
- 7 Bathroom



FLOOR PLAN

APARTMENT 400-B

Penthouse (3 Bedrooms + terraces)

2722.08 sqft + 1103.62 sqft



APARTMENT 400B, BUILDING B

- 1 Living / Dining Room
- 2 Kitchen
- 3 Terrace
- 4 Laundry
- 5 Master Bedroom 1
- 6 Walk in closet
- 7 Master Bedroom 2
- 8 Bedroom 3
- 9 Bathroom



FLOOR PLAN

APARTMENT 101-C 3 Bedrooms + terraces 1849.45 SQ FT + 283.95 SQ FT



APARTMENT 101-C, BUILDING C

- 1 Living / Dining Room
- 2 Kitchen
- 3 Terrace
- 4 Laundry
- 5 Master Bedroom
- 6 Bedroom 2
- 7 Bedroom 3
- 8 Bathroom



FLOOR PLAN

APARTMENT 102-C

3 Bedroom + terraces

1849.45 SQFT + 283.95 SQ FT



APARTMENT 102-C, BUILDING C

- 1 Living / Dining Room
- 2 Kitchen
- 3 Terrace
- 4 Laundry
- 5 Master Bedroom
- 6 Bedroom 2
- 7 Bedroom 3
- 8 Bathroom



FLOOR PLAN

APARTMENT 201-C

3 Bedroom + terraces

1849.45 SQFT + 283.95 SQ FT



APARTMENT 201-C, BUILDING C

- 1 Living / Dining Room
- 2 Kitchen
- 3 Terrace
- 4 Laundry
- 5 Master Bedroom
- 6 Bedroom 2
- 7 Bedroom 3
- 8 Bathroom



FLOOR PLAN

APARTMENT 202-C

3 Bedroom + terraces

1849.45 SQFT + 283.95 SQ FT



APARTMENT 202-C, BUILDING C

- 1 Living / Dining Room
- 2 Kitchen
- 3 Terrace
- 4 Laundry
- 5 Master Bedroom
- 6 Bedroom 2
- 7 Bedroom 3
- 8 Bathroom



FLOOR PLAN

APARTMENT 301-C

3 Bedroom + terraces

1849.45 SQFT + 283.95 SQ FT



APARTMENT 301-C, BUILDING C

- 1 Living / Dining Room
- 2 Kitchen
- 3 Terrace
- 4 Laundry
- 5 Master Bedroom
- 6 Bedroom 2
- 7 Bedroom 3
- 8 Bathroom



FLOOR PLAN

APARTMENT 302-C

3 Bedroom + terraces

1849.45 SQFT + 283.95 SQ FT



APARTMENT 302-C, BUILDING C

- 1 Living / Dining Room
- 2 Kitchen
- 3 Terrace
- 4 Laundry
- 5 Master Bedroom
- 6 Bedroom 2
- 7 Bedroom 3
- 8 Bathroom



FLOOR PLAN

APARTMENT 401-C

Penthouse (2 Bedrooms + terraces)

1598.87 SQ FT+ 534.53 SQ FT



APARTMENT 401-C, BUILDING C

- 1 Living / Dining Room
- 2 Kitchen
- 3 Terrace
- 4 Laundry
- 5 Master Bedroom
- 6 Bedroom 2
- 7 Bathroom



FLOOR PLAN

APARTMENT 402-C

Penthouse (2 Bedrooms + terraces)

1598.95 SQ FT+ 534.53 SQ FT



APARTMENT 402-C, BUILDING C

- 1 Living / Dining Room
- 2 Kitchen
- 3 Terrace
- 4 Laundry
- 5 Master Bedroom
- 6 Bedroom 2
- 7 Bathroom

